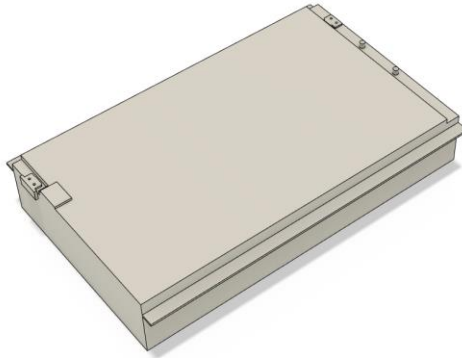




## High Capacity Pack S16

58,72V 11,04kWh

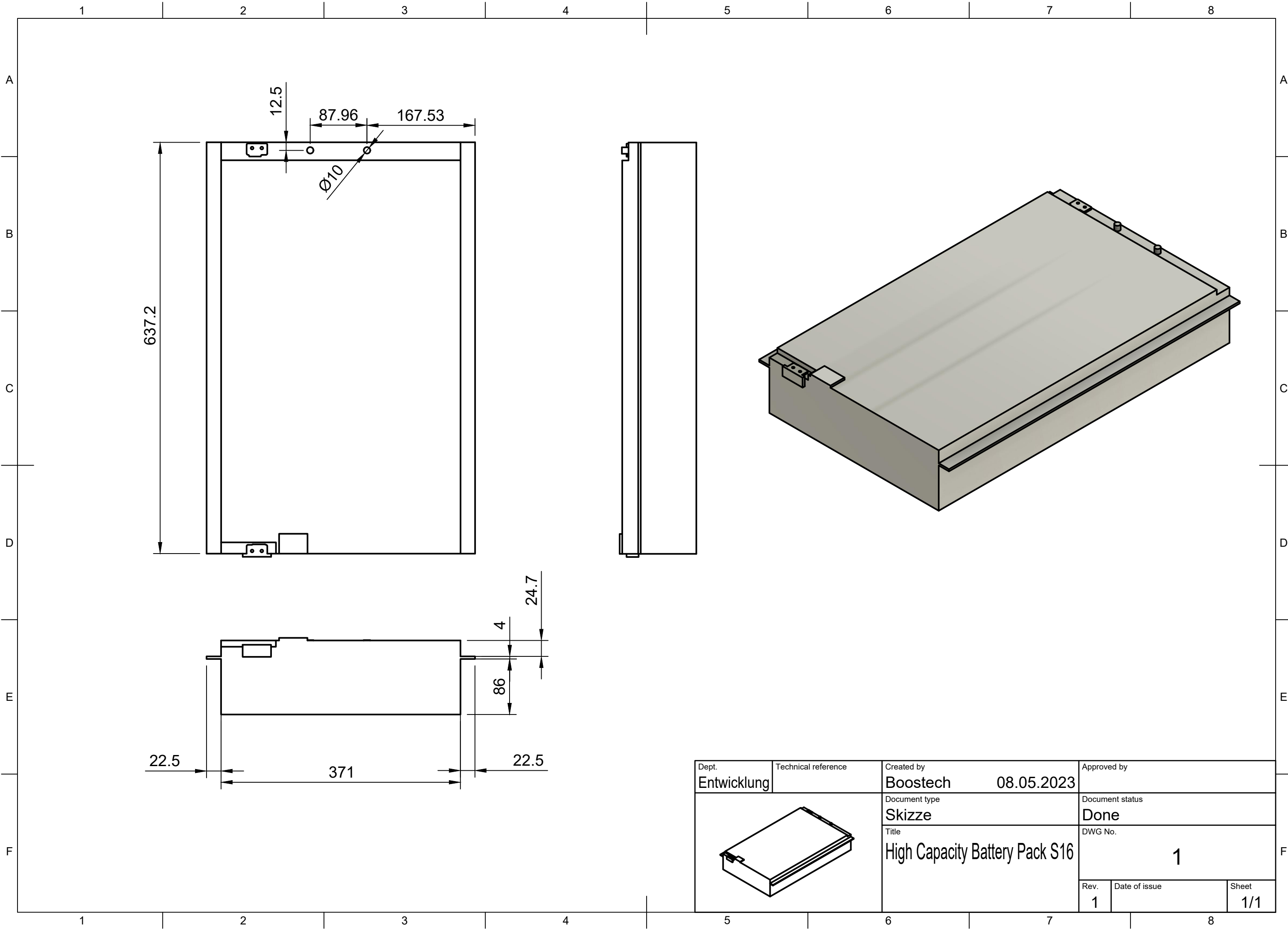


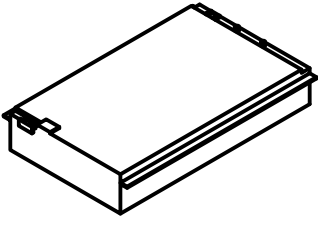
### Electrical Data

Rating (kWh) (100% DOD)		11,04kWh
Recommended DOD		80%
Nominal Capacity (Ah)		188Ah
Discharge Current (A)	Cont. @ 23°C @ 50% SoC	273
	Peak <15sec @ 23°C	400
	Peak < 5sec @ 23°C	700
Charge Current (A)	Cont. @ 23°C @ 50% SoC	273
	Peak <15sec @ 23°C	400
Minimum Voltage (V)		44,8
Nominal Voltage (V)		58,72
Maximum Voltage (V)		67,2

### General Data

Module manufacturer		CATL
Cell Chemistry		NMC811
Type of cell		Hard Case
Cell Configuration		16s2p
Estimated Cycle @ 70% DOD at 20°C 0.5C/0.5C		> 2800
Temperature (cell) for full power		-20 to +45°C
Storage Temperature		-40 to +60°C



Dept. Entwicklung	Technical reference	Created by Boostech	08.05.2023	Approved by
	Document type Skizze	Document status Done		
	Title High Capacity Battery Pack S16	DWG No. 1		
	Rev. 1	Date of issue	Sheet 1/1	